

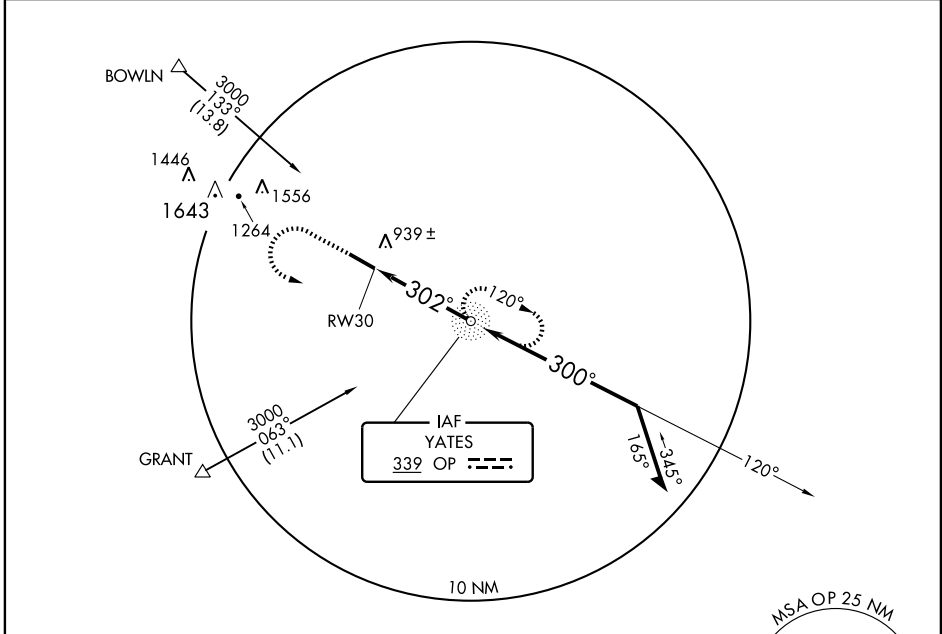
NDB or GPS RWY 30

THOMASTON-UPSON COUNTY (OPN)

NDB OP 339	APP CRS 302°	Rwy ldg TDZE Apt Elev	6351 796 796
----------------------	------------------------	-----------------------------	---

NA	MALSR	MISSED APPROACH: Climb to 1400 then climbing left turn to 3000 direct OP NDB and hold.
----	-------	--

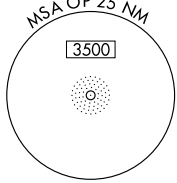
AWOS-3 133.975	ATLANTA APP CON* 124.2 279.6	GCO 121.725	UNICOM 122.8 (CTAF)
--------------------------	--	-----------------------	-------------------------------



SE-4, 20 NOV 2008 to 18 DEC 2008

SE-4, 20 NOV 2008 to 18 DEC 2008

ELEV 796 Rwy 12 ldg 5701'



1400	3000	OP 339
------	------	-----------

Remain within 10 NM

NDB 120° 3000

302° 4 NM from FAF

3.19° TCH 40

2200

4 NM

VGSI and descent angles not coincident.

MIRL Rwy 12-30					
FAF to MAP 4 NM					
Knots	60	90	120	150	180
Min:Sec	4:00	2:40	2:00	1:36	1:20
CATEGORY	A	B	C	D	
S-30	1240-3/4 444 (500-3/4)			1240-1 1/4 444 (500-1 1/4)	
CIRCLING	1240-1 444 (500-1)	1260-1 464 (500-1)	1260-1 1/2 464 (500-1 1/2)	1360-2 564 (600-2)	