

THOMASTON, GEORGIA

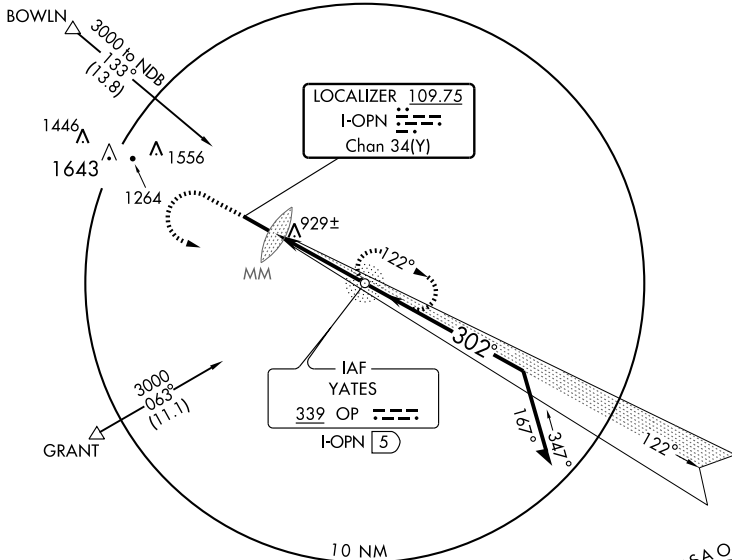
AL-9190 (FAA)

LOC/DME I-OPN 109.75 Chan 34 (Y)	APP CRS 302°	Rwy ldg 6351 TDZE 796 Apt Elev 796
--	------------------------	---

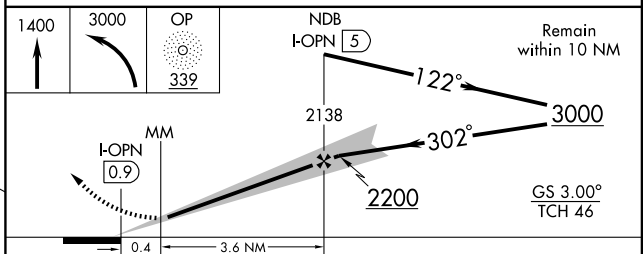
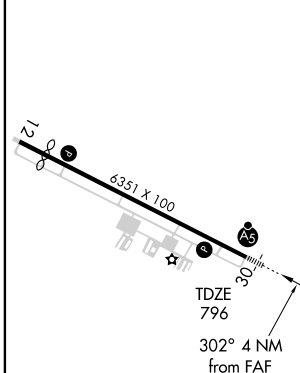
ILS RWY 30
THOMASTON-UPSON COUNTY (OPN)

NA	ADF REQUIRED	MALSR A5	MISSED APPROACH: Climb to 1400 then climbing left turn to 3000 direct to YATES NDB and hold.
-----------	--------------	--------------------	--

AWOS-3 133.975	ATLANTA APP CON * 124.2 279.6	GCO 121.725	UNICOM 122.8 (CTAF) 0
--------------------------	---	-----------------------	--



ELEV 796	Rwy 12 ldg 5701'
----------	------------------



CATEGORY	A	B	C	D
S-ILS 30		996-1/2	200 (200-1/2)	
S-LOC 30		1140-1/2	344 (400-1/2)	1140-3/4 344 (400-3/4)
CIRCLING	1240-1 444 (500-1)	1260-1 464 (500-1)	1260-1 1/2 464 (500-1 1/2)	1360-2 564 (600-2)

MIRL Rwy 12-30 0					
FAF to MAP 4 NM					
Knots	60	90	120	150	180
Min:Sec	4:00	2:40	2:00	1:36	1:20

THOMASTON, GEORGIA
Amdt 1 06271

32° 57'N - 84° 16'W

THOMASTON-UPSON COUNTY (OPN)
ILS RWY 30

SE-4, 20 NOV 2008 to 18 DEC 2008

SE-4, 20 NOV 2008 to 18 DEC 2008